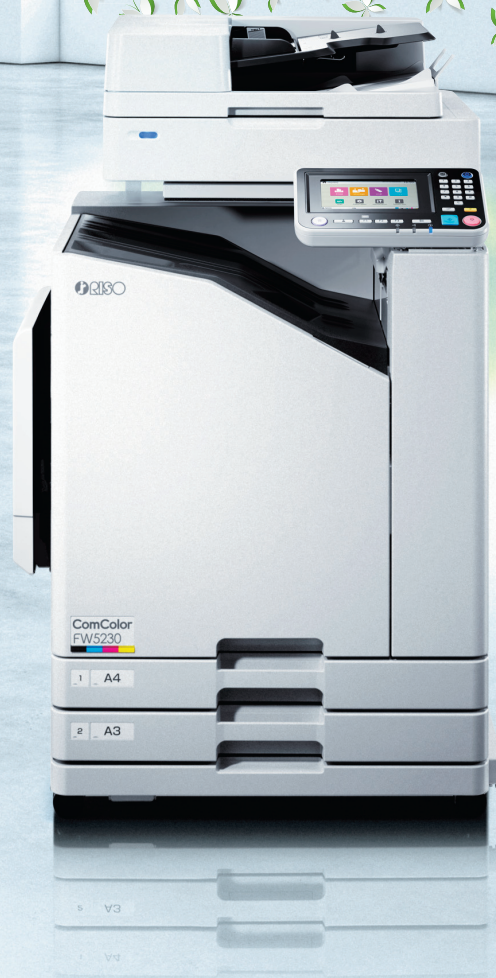




INCREASED EFFICIENCY. ECO-FRIENDLY DESIGN.

DISCOVER A GREENER,
MORE EFFICIENT WAY TO WORK.

ComColor GD/FW



Print Go green

PRODUCTIVITY PLUS

BLAZINGLY FAST PRINTING FOR ECO-EFFICIENCY

Each print job finishes faster, reducing printer-operation time.

GET THE RISO ADVANTAGE

The ComColor markedly reduces time spent printing, a real plus that saves energy while eliminating printer bottlenecks that can negatively impact office operations.

RISO ComColor GD/FW SPEED ADVANTAGE

1000 SHEETS A4-size pages in full color



■ RISO ComColor
GD9630



■ RISO ComColor
FW5230



■ PRINTER A
(65 ppm)

REDUCED PER-PAGE PRINT COSTS

By decreasing printing times, the ComColor uses less electricity than most other printers in its class. This results in significant cost benefits to you on electricity bills.

RISO ComColor GD/FW POWER SAVINGS ADVANTAGE

1000 SHEETS A4-size pages in full color

■ RISO ComColor GD9630

⚡ = 117 Wh¹

■ RISO ComColor FW5230

⚡ = 127 Wh¹

■ PRINTER A

⚡ = 450 Wh²

1 Power consumption per page based on TEC calculation for ENERGY STAR® imaging equipment.

2 Based on the average of four ENERGY STAR®-certified printers with a print speed of 65 ppm.



fast,

AN EARTH-CONSCIOUS WAY TO SPEED PRINTING AND INCREASE OFFICE EFFICIENCY

Let RISO show you how ecology and productivity go hand in hand.



LESS IS MORE

LEVERAGE THE INKJET ECO-ADVANTAGE

The ComColor maintains a small environmental footprint.

COST-EFFICIENT OPERATIONS



LESS POWER

No heat is used during the print-imaging stage, so less electricity is needed. This energy efficiency adds up to significant cost savings over the life of the printer.

OUTSTANDING DURABILITY



LESS PARTS

Inkjet printers have fewer replaceable parts than toner-based printers, resulting in fewer things that can go wrong for less downtime and maintenance.

COMFORTABLE WORK ENVIRONMENT



LESS OZONE

Unlike toner-based printers, RISO inkjet printers employ an imaging process that eliminates ozone and toner emissions.

NATURAL RESOURCE CONSERVATION



LESS PAPER

The ability to print on ultra lightweight paper (46 gsm) and reduce blank sides through duplex printing means less emissions in paper transporting and more sheets per tree.

MORE ENERGY-SAVING FUNCTIONS

POWER SCHEDULE MODE

Administrators can set the printer to enter/exit sub-power mode at certain times and/or days of the week. Never worry about forgetting to turn the printer off after working hours or on the weekend.

SLEEP MODE

Set the time the printer activates sleep mode after the last print job to decrease electrical consumption during periods of non-usage. This mode keeps power consumption lower, further enhancing savings on electricity bills.

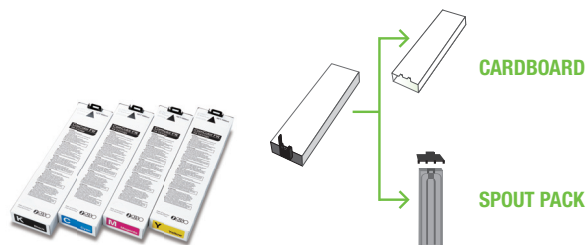


GREEN, EVERY STEP OF THE WAY

TRUST RISO TO DELIVER ON ITS PROMISE OF PROMOTING A CLEANER EARTH.

RECYCLED PARTS MAKE THE MOST OF MORE

To go easy on the environment both before and after usage, ink cartridges for the ComColor are made partially from recycled components. Moreover, the cartridges can be easily disassembled into component parts to make disposal easier.



The structure of the cartridge makes it easy to collect, reuse and recycle.

ECO-PROVEN PERFORMANCE WORLDWIDE

ComColor's acquisition of and compliance with various environmental labels and directives from around the world are your assurance of the green performance. The following labels and directives apply to the ComColor GD/FW and/or its Japanese-model equivalent ORPHIS GD/FW.



ENERGY STAR® PROGRAM

An international program that promotes energy saving in office machines. The program sets standards in terms of the power consumption of office machines in each of the operation, sleep and OFF modes*.

*Varies according to region.



REACH REGULATION

Registration, Evaluation, Authorisation and Restriction of Chemical Substances (REACH) is an European Community regulation on chemicals and their safe use.



RoHS DIRECTIVE

European Union directive on the restriction of the use of certain hazardous substances in electrical and electronic equipment.



ErP DIRECTIVE

European Community's directive that requires eco design be employed for energy-related products.



LAW ON PROMOTING GREEN PURCHASING*

Japanese law that states product procurement items and criteria for products that comply with the Japanese Law Concerning the Promotion of Procurement of Eco-Friendly Goods and Services by the State and Other Entities.

*ORPHIS only.

